

# Certification & Registration

- Update

**Scott Wade, Technical & Certification Manager**

28<sup>th</sup> June 2018



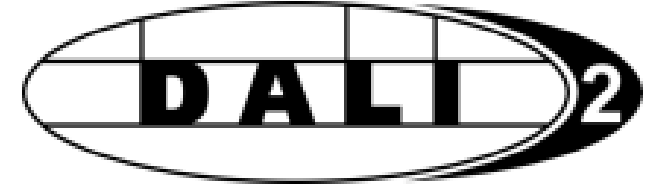
# DiiA Certification & Registration webinar

- **Presenter:** Scott Wade, DiiA Technical & Certification Manager
- Presentation will last for approx. 40-45 minutes, followed by a Q&A session
- **Ask a question** → please use the **“Q&A” box** on your screen
- Technical issues → please use the “Chat” box
- After the live events, we will provide the following on our [website](#):
  - PowerPoint presentation
  - A recording of the webinar
  - Written answers to all questions asked during the webinar(s)
- If you have further questions after the event, please [click here](#) for contact information

# Agenda

1. **Certification – now & next**
2. **IEC 62386 update**
3. **Registration – current status**
4. **Certification & registration**
  - Updated products & family products
  - Combination, multi-bus and OEM products
  - Colour control gear
5. **DALI testing** - test sequence software and plug-fests
6. **Website** – product submission updates, database download, public search
7. **FAQ**
8. **Q&A**

# 1. Certification – current status



## Products that can already be DALI-2 certified

- **Control gear**



- LED drivers
- Control gear that does not implement any part 2xx (e.g. converter)
- Integrated bus power supplies not yet possible

- **Control devices**



- Single-master application controllers
- Integrated bus power supplies allowed (with some additional manual testing)

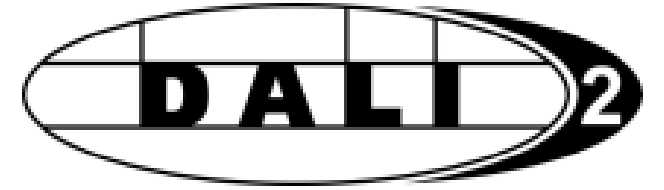
- **Bus power supplies**

- Requires some additional manual testing



# 1. Certification – coming next

- **Products that can soon be certified**
  - **Control gear**
    - Including those with integrated bus power supplies
  - **Control devices**
    - Multi-master application controllers
  - **Bus power supplies**
    - Simplification of testing
- **In progress**
  - **Control gear:** Part 209 colour control gear, colour types  $T_c$  and xy
  - **Control devices:** Input devices. 301 (push-button), 303 (occupancy sensor) already in beta testing
- **Later**
  - Part 202 (Emergency)



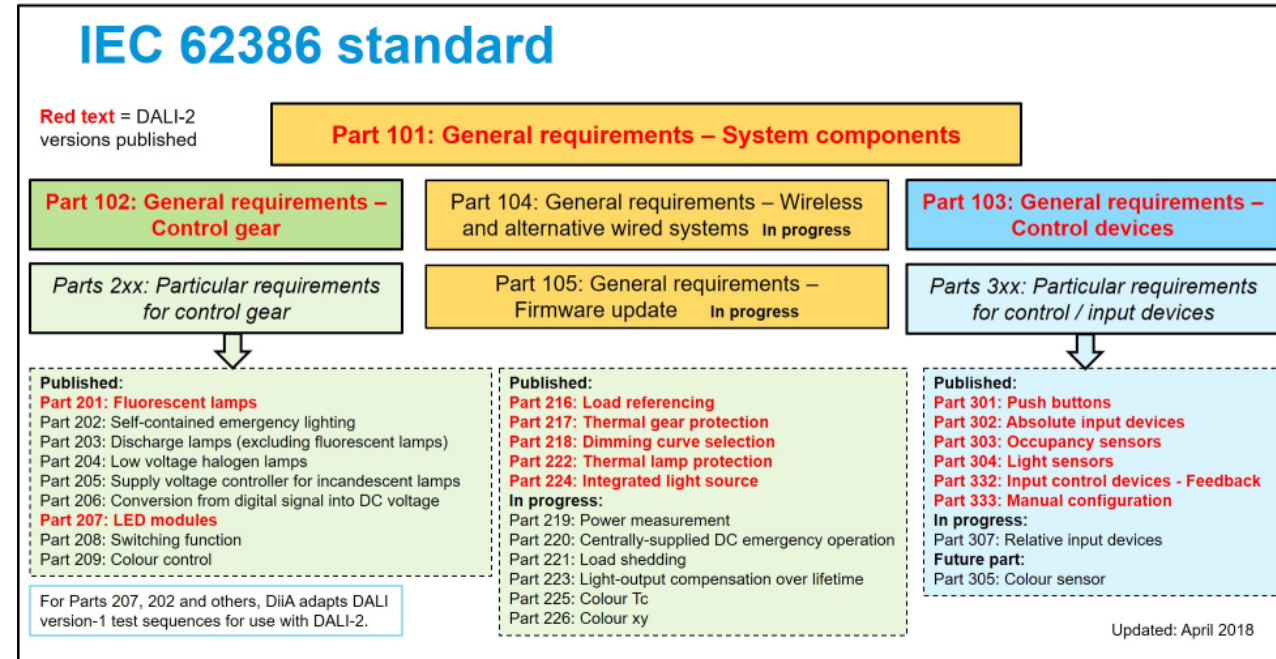
# 2. IEC 62386 update

- Parts 101, 102 and 103 – amendment 1
  - Version 2.1
  - (May'18 pre-release of official publication)

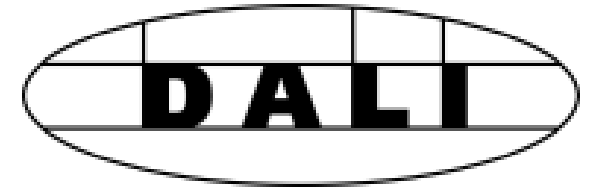
- **Recent publications:**

- Part 207 – LED (Apr'18)
- Part 216 – Load referencing (Apr'18)
- Part 217 – Thermal gear protection (Mar'18)
- Part 218 – Dimming curve selection (Mar'18)
- Part 221 – Demand response/Load shedding (Jun'18)
- Part 222 – Thermal lamp protection (Apr'18)
- Part 224 – Non-replaceable light source (Mar'18)
- Part 333 – Manual configuration feature (Apr'18)

- DiiA now has an **official liaison** agreement in place with IEC 62386 WG11



# 3. Registration – current status



- **1<sup>st</sup> June 2018**
  - This was the deadline for registration of existing DALI version-1 products.
  - To continue using the DALI Trademark on products, it is necessary to register them.
  - There is no need to submit test results. For DALI version-1, members are confirming that the product has passed all tests, with allowed exceptions.
  - Keep the test results in-case we ask to see them.
- **New DALI version-1 products**
  - These can still be registered through your website account.
  - The end date for registration of DALI version-1 products, has not yet been decided.

# 4. Certification & registration

- See the *Product Submission Guide* for more details on the following:
- **Updating Registered or Certified Products**
  - Re-testing may be required
  - Product information must be updated
  - For changes to the firmware or hardware version numbers, contact the T&C Manager
  - If the product part number or GTIN changes – a new submission is required
- **Family products**
  - At least one product in the family requires full testing – the “family reference product”
  - Other family members may require some testing
  - Each family member requires submitting for Certification or Registration





# 4. Certification & registration

- See the *Product Submission Guide* for details on the following:

- **Combination and multi-bus products**

- Multi-bus: Full testing is required on at least 2 of the DALI interfaces
- Additional requirements for products with integrated, switchable DALI bus power supplies.

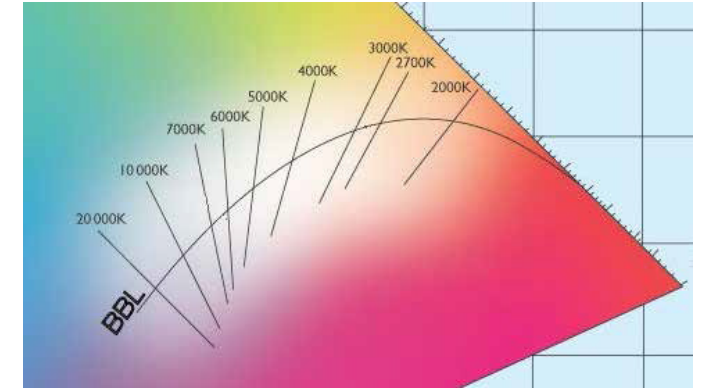


- **OEM/ODM products**

- The company whose name or brand appears on a DALI/DALI-2 Trademarked product, must be a DiiA member.
- That company is responsible for registering or certifying the product.
- Testing may be carried out by that company, or the original manufacturer/designer, or a test-house.

**OEM/ODM**

# 4. Certification & registration



- **Colour control gear (part 209, DT8)**
  - A temporary exemption is granted for the part 209 testing, allowing DALI version-1 Trademark use provided the product is registered and all other tests were complete successfully.
  - Once official part 209 tests are released, testing and certification will be necessary.
  - See the *Trademark Guidelines for Members* for full requirements.

# 5. DALI testing

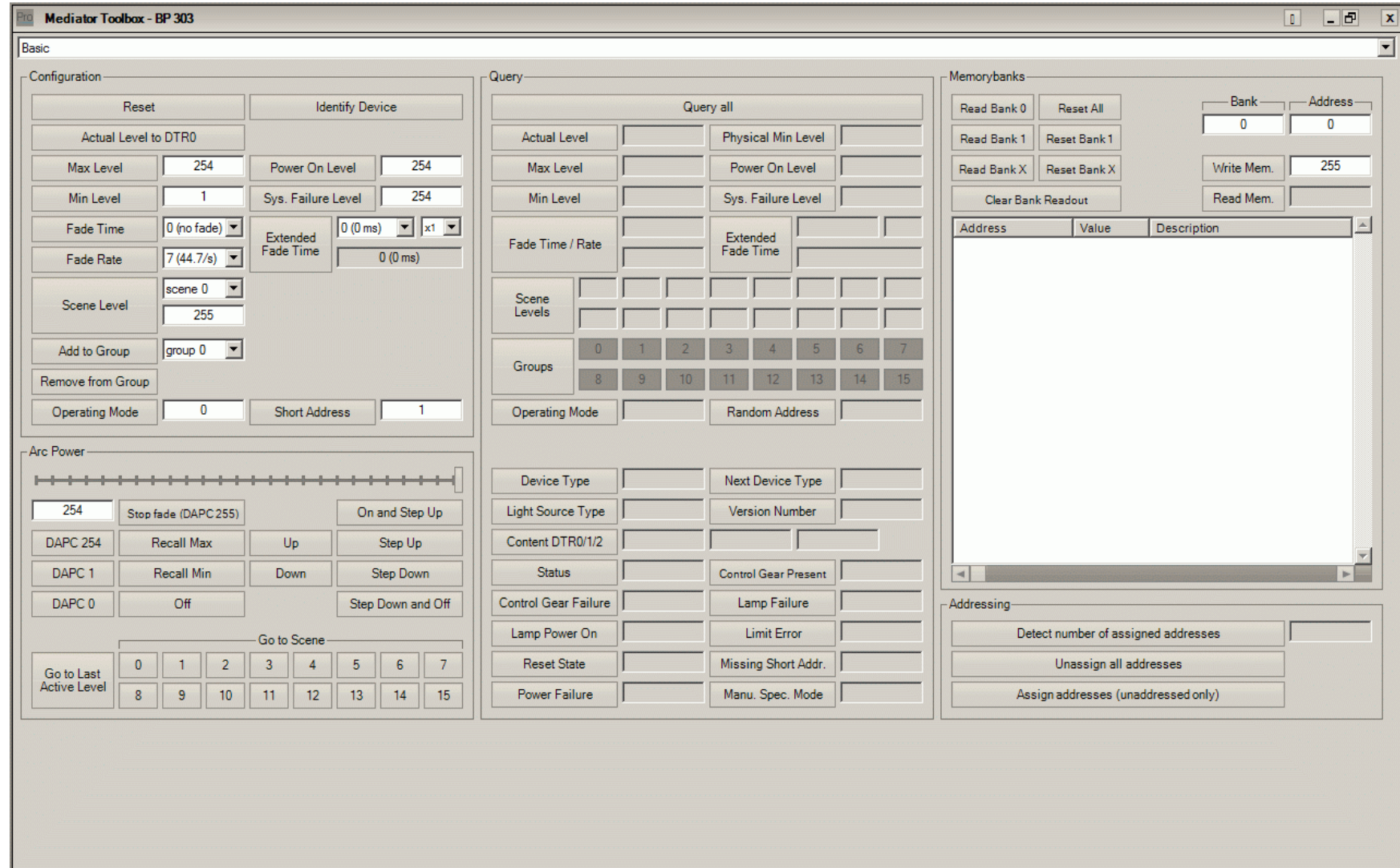
- Current release is **2.0.6.0** for **DALI-2** and **1.1.5.0** for **DALI version-1**
- Beta testing of a new version is almost complete
  - Updates to DALI-2 tests for parts 101-103
- The new version also includes an update of the ProbitLab and ProbitLab2 firmware.
  - The update resolves a problem seen by a small number of members, where Probit could perceive short glitches on the DALI bus.
- A DiiA “Guide to DALI testing” is in development.
  - This will include setting-up and use of the Probit system, hints, tips and an FAQ.
- Beta testing of additional tests for input devices and colour control gear is also in progress
  - The following screen images show the extensions for these beta tests.



# 5. DALI testing – mediator toolbox

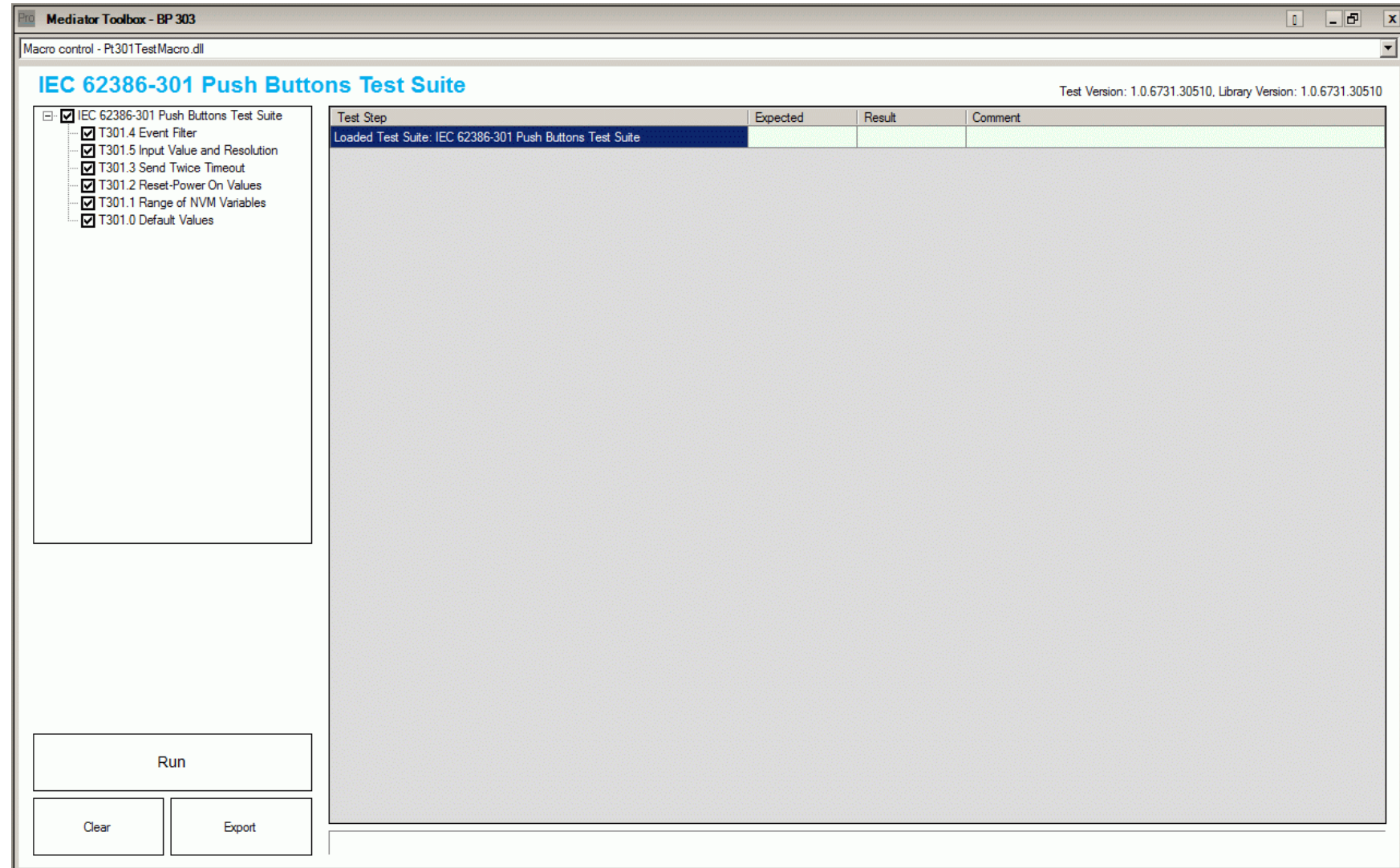
## Mediator toolbox

- Already built-in to ProbitBench
- Useful for control gear testing



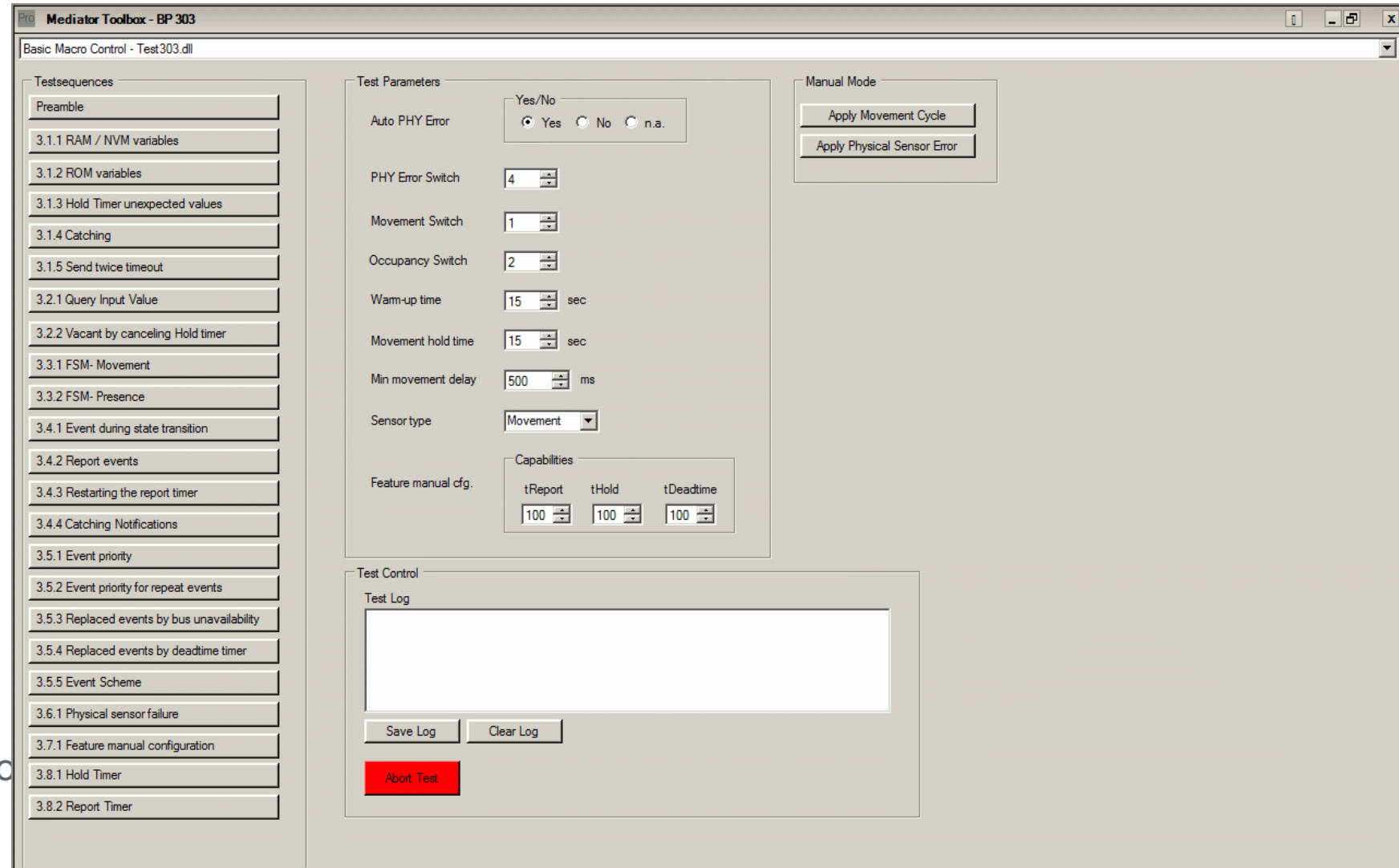
# 5. DALI testing – 301 beta tests

- Courtesy of zencontrol
- Push-button input device
- Implemented using Lichtvision's macro interface for extensions to ProbitBench.



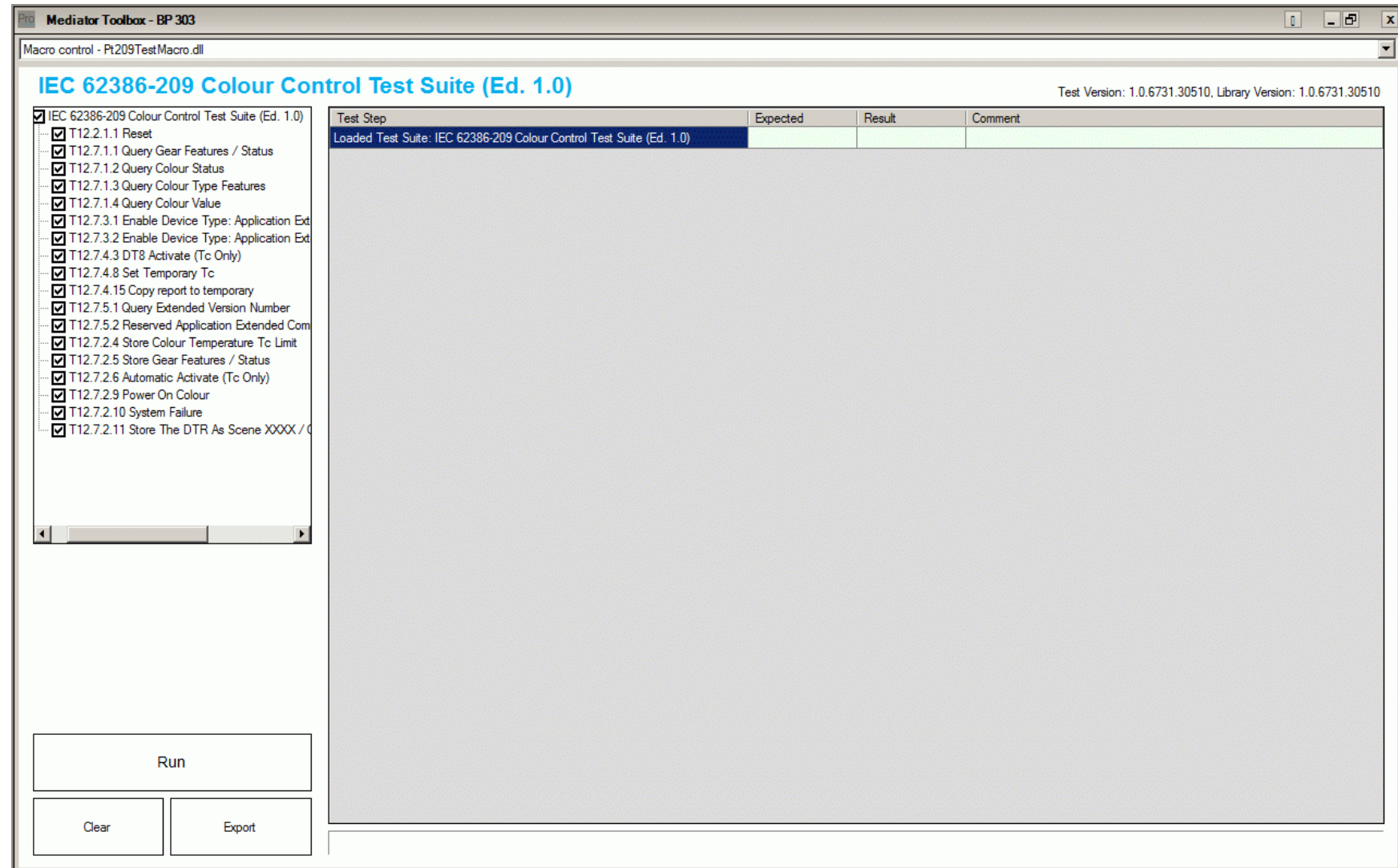
# 5. DALI testing – 303 beta tests

- Courtesy of Loytec
- Occupancy sensor input device
- 303 allows two types of occupancy sensor:
  - Movement sensors
  - Presence sensors
- Tests are currently for movement sensors only.
- Implemented using Lichtvision's macro interface for extensions to ProbitBench.

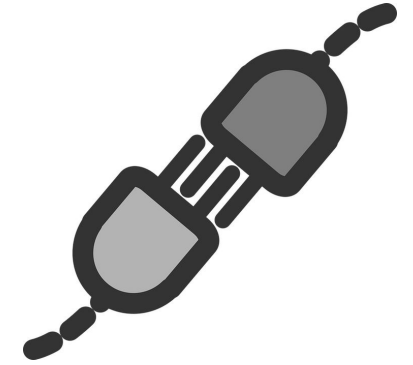


# 5. DALI testing – 209 beta tests

- Courtesy of zencontrol
- Colour control gear
- 209 (Device Type 8) allows 4 colour types:
  - colour temperature  $T_c$
  - xy chromaticity
  - RGBWAF
  - primary N
- Tests are currently for  $T_c$  colour type only
- Implemented using Lichtvision's macro interface for extensions to ProbitBench.



# 5. DALI testing – Plug-fests



- We hold **plug-fests for T&C Working Group members**
  - The fourth plug-fest is scheduled for Lüdenscheid in September 2018
  - We prioritise testing of products that don't yet have official released tests.
  - Current examples include colour control gear and input devices.
- **Plug-fest for all members**
  - Early discussions, but proposal is to hold an event in early 2019
  - Dates, location and other details are not yet decided





# 6. Website – product submission form

- New “Technical” information:
  - Bus current consumption (part 102/103, test 12.3.4)
  - Guaranteed supply current (bus power supply)
  - Maximum supply current (bus power supply)

### Technical

Bus current consumption  
ImA:

Guaranteed supply current  
ImA:

Maximum supply current  
ImA:

- Product properties
  - Basic properties automatically determined from the part 102, 103, 2xx
  - Additional properties need to be manually selected
  - Examples:

### Modify product properties for Platinum series II LED Driver 20W

This product has the following parts: 102, 207

Control gear

- LED
- Bus powered

Bus power supplies

### Modify product properties for Platinum series II LED Driver 20W

This product has the following parts: 102, 207, 209

Control gear

- LED
- Colour control
  - Colour type xy coordinate
  - Colour type Tc
- Bus powered

Bus power supplies

# 6. Website – product submission form

- Application controller properties
  - Many options
  - Describe features that the application controller provides
  - Example: Support for Colour control (part 209, DT8)
    - Additional tick-boxes for the supported colour types

This product has the following parts: 101, 103

- Application controllers
  - Supports DALI version-1 control gear
  - Supports DALI-2 control gear
  - More than one DALI bus supported
  - Bus powered
  - Support for event messages from input devices
  - Support for other application controllers on the same bus
  - Support for Push-buttons (part 301)
  - Support for Switches/sliders (part 302)
  - Support for Occupancy sensors (part 303)
  - Support for Light sensors (part 304)
  - Support for generic input devices
  - Support for Self-contained emergency (part 202, DT1)
  - Support for Discharge lamps (part 203, DT2)
  - Support for Low voltage halogen (part 204, DT3) specific features
  - Support for Incandescent dimmer (part 205, DT4) specific features
  - Support for Conversion to DC (1-10V) interface (part 206, DT5) specific features
  - Support for LED (part 207, DT6) specific features
  - Support for Switching (part 208, DT7) specific features
  - Support for Colour control (part 209, DT8)
    - Supports colour type xy coordinate
    - Supports colour type Tc
  - Supports feedback from control gear (including lamp failure feedback)
  - Provides support for addressing or grouping of control gear
  - Support for features of connected control devices: Feedback (332) and/or Manual configuration (333)
- Input devices
- Bus power supplies

# 6. Website – database download (coming soon)

- **Download of public content** of the product database
  - For Regular and Associate members
  - XLSX format
  - System software can read the GTIN from the memory bank of each discovered product
  - Together with the XLSX data, this can allow automatic identification of product information such as: brand, product name, part number and other public information

- **Download of member's own product information**
  - Also XLSX format
  - Contains all products belonging to the member
  - Includes products not yet Certified or Registered
  - Includes information not available to the public

## Certified and Registered Products

**Certified products** have successfully completed the DiIA certification process for DALI-2.

**Registered products** are DALI version 1 products that have been successfully tested by the member or a test-house.

Product Search

-- select brand --

Part number

Product name

Include registered DALI version-1 & version-0 products

Include discontinued products

Product ID

GTIN

Control gear  
 Application controllers  
 Input devices  
 Bus power supplies

Search

Showing products 1-7

7 results total

Brand Name	Product Name	DALI Parts	Registration Date	DALI 2 Certified
Cosram	QII		Sep 29, 2017	Yes
TM.brand2	Tim's test product	102_207	Sep 29, 2017	Yes
Dynalite	DDBC120-DALI	102_207	Jul 3, 2017	Yes
Cosram	test1		Jun 28, 2017	Yes
TM.brand2	LED1205a5	102_207	Jun 26, 2017	Yes
TM.brand1	ProdName4	102_207	Jun 23, 2017	Yes
TM.brand2	My DALI-2 Product Name 003	102_207	-	Yes

[Download CSV](#)

# 6. Website – product search (public)

- Product search now allows filtering by specific properties.
- Each selected property will narrow the search results.
- The example shown will search for only application controllers that also have an integrated bus power supply.
- It is important when products are submitted for Certification or Registration that all of the features supported by the product are correctly selected.
- Search by GTIN will be added soon.

- Control gear
- Application controllers
  - Supports DALI version-1 control gear
  - Supports DALI-2 control gear
  - More than one DALI bus supported
  - Bus powered
  - Support for event messages from input devices
  - Support for other application controllers on the same bus
  - Support for Push-buttons (part 301)
  - Support for Switches/sliders (part 302)
  - Support for Occupancy sensors (part 303)
  - Support for Light sensors (part 304)
  - Support for generic input devices
  - Support for Self-contained emergency (part 202, DT1)
  - Support for Discharge lamps (part 203, DT2)
  - Support for Low voltage halogen (part 204, DT3) specific features
  - Support for Incandescent dimmer (part 205, DT4) specific features
  - Support for Conversion to DC (1-10V) interface (part 206, DT5) specific features
  - Support for LED (part 207, DT6) specific features
  - Support for Switching (part 208, DT7) specific features
  - Support for Colour control (part 209, DT8)
  - Supports feedback from control gear (including lamp failure feedback)
  - Provides support for addressing or grouping of control gear
  - Support for features of connected control devices: Feedback (332) and/or Manual configuration (333)
- Input devices
- Bus power supplies
  - Guaranteed supply current > 100 mA
  - Maximum supply current < 250 mA

# 7. FAQ




frequently  
asked  
QUESTIONS

- **Can we still register DALI version-1 products?**
  - Yes! The deadline of 1<sup>st</sup> June 2018 was for existing DALI version-1 products, but if any have not yet been registered, or new DALI version-1 products are developed, these need to be registered. The end date for registration of DALI version-1 products, has not yet been decided.
- **Can the DALI logo be used on products designed for DALI-2?**
  - Yes, on control gear, but the product **must be submitted for certification** as with all DALI-2 products.
- **“Do we need to buy a ProbitLab 2 for DALI-2 testing?”**
  - For control gear that does not have an integrated bus power supply, the ProbitLab 1 is fine.
  - ***For control devices, or bus power supplies or any product with an integrated bus power supply, ProbitLab 2 is necessary.***

# 7. FAQ



frequently  
asked  
QUESTIONS

- **I can't submit a product due to a problem with the GTIN.**
  - Ensure the GTIN is valid, owned by your company, and has not already been used for another product submission. 
- **We make a product for another DiiA member, how do we certify it with their brand?**
  - The member whose brand is shown on the product must submit it for certification through their own DiiA account. However, the test results from the original manufacturer may be used.
- **We make products that are identical except for the brand. Do these need unique GTINs?**
  - Yes, each product needs a unique GTIN, whether the brands belong to the same member, or to a different member. Testing can be much reduced – see the *Product Submission Guide*.

# 7. FAQ



frequently  
asked  
QUESTIONS

- **We have updated the firmware/hardware in our product – do we need to re-test?**
  - You must determine if there are any tests that are at risk due to the changes, and re-run these tests. Once successful, the firmware/hardware versions in your product entry can be updated. See the *Product Submission Guide*. Contact the Technical & Certification Manager if you need clarification.
- **DALI version-1: “Is the original DALI logo allowed on control devices such as sensors?”**
  - No – these must pass the DALI-2 tests and be certified. There are no DALI version-1 tests for control devices.
- **What is “Community registration”**
  - For luminaire manufacturers using DALI or DALI-2 marked products from DiiA members
  - Not suitable for manufacturers of control gear, control devices or bus power supplies – they must become a Regular or Associate member.

# 8. Q&A

We are now open for questions!

If you have **further questions**, please contact:

- **Technical**, test or certification questions:
  - DiiA Technical & Certification Manager:
- **Marketing**:
  - DiiA Marketing Manager:
- **Membership** or general questions:
  - DiiA General Manager:

[Technical@Digitalilluminationinterface.org](mailto:Technical@Digitalilluminationinterface.org)

[Marcom@Digitalilluminationinterface.org](mailto:Marcom@Digitalilluminationinterface.org)

[GM@Digitalilluminationinterface.org](mailto:GM@Digitalilluminationinterface.org)



